



NABU's work at Kafa Biosphere Reserve: Introduction and highlights

Svane Bender-Kaphengst 25/11/2015

NABU - Who we are

One of the biggest and oldest nature conservation organisations in Germany (> 115 years)

Counts almost 600,000 members and supporters, 30,000 volunteers

NABU works in Africa, Asia and Caucasus

NABU is the German partner of BirdLife International (>100 partner NGOs worldwide)



Kafa Biosphere Reserve



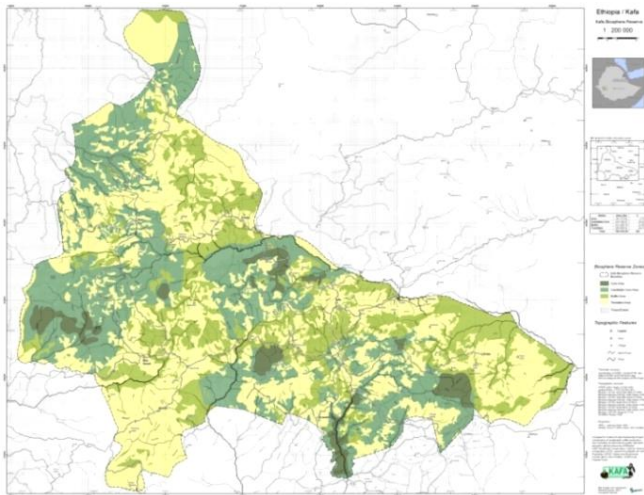
Kafa Biosphere Reserve

One of the last remaining forest areas in Ethiopia

Eastern Afromontane Hotspot of Biodiversity

Recognised by UNESCO in 2010

760,000 ha, ~ 1 Mio. inhabitants



Kafa Biosphere Reserve

Natural highlights: Caves, water falls, hot springs, wildlife incl. lions...

Regional products: Wild ginger, pepper, cardamom, honey...

Historical and cultural values: Kafa Kingdom, National Coffee Museum...

Home and world in situ gene pool of Arabica coffee with enormous diversity and extraordinary value



Threats to the forest

Forest loss of ~43% (1988-2008)

Challenges: population growth, selective logging, conversion into farm land, agroinvestment

Consequences: fragmentation/ degradation, land slides, change of microclimate, loss of species/ ecosystem services

Disappearance of the forests within the next decades?

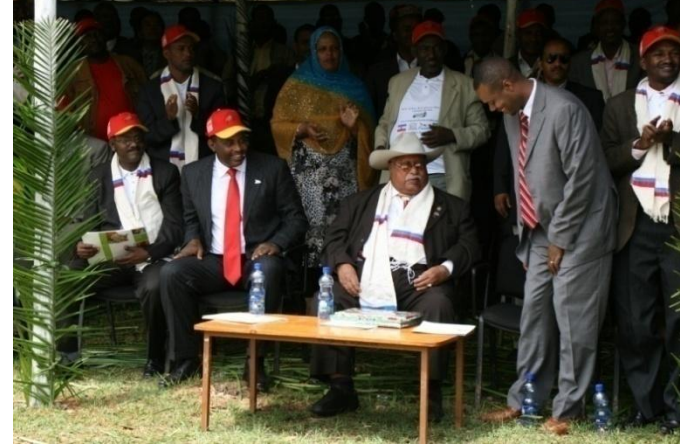


NABU's support to Kafa

Establishment of Kafa Biosphere Reserve
(Public-Private Partnership with
GIZ/German/international partners)

Support to infrastructure/ management,
promotion, business cooperation

Support to research e.g. lions



NABU's projects

Supported by:



Federal Ministry
for the Environment, Nature Conservation,
Building and Nuclear Safety

based on a decision of the German Bundestag

2009-2014:

**„Climate Protection and Preservation of
Primary Forests – A management Model
using the Wild Coffee Forests as Example‘**

(3,2 Mio. EUR)

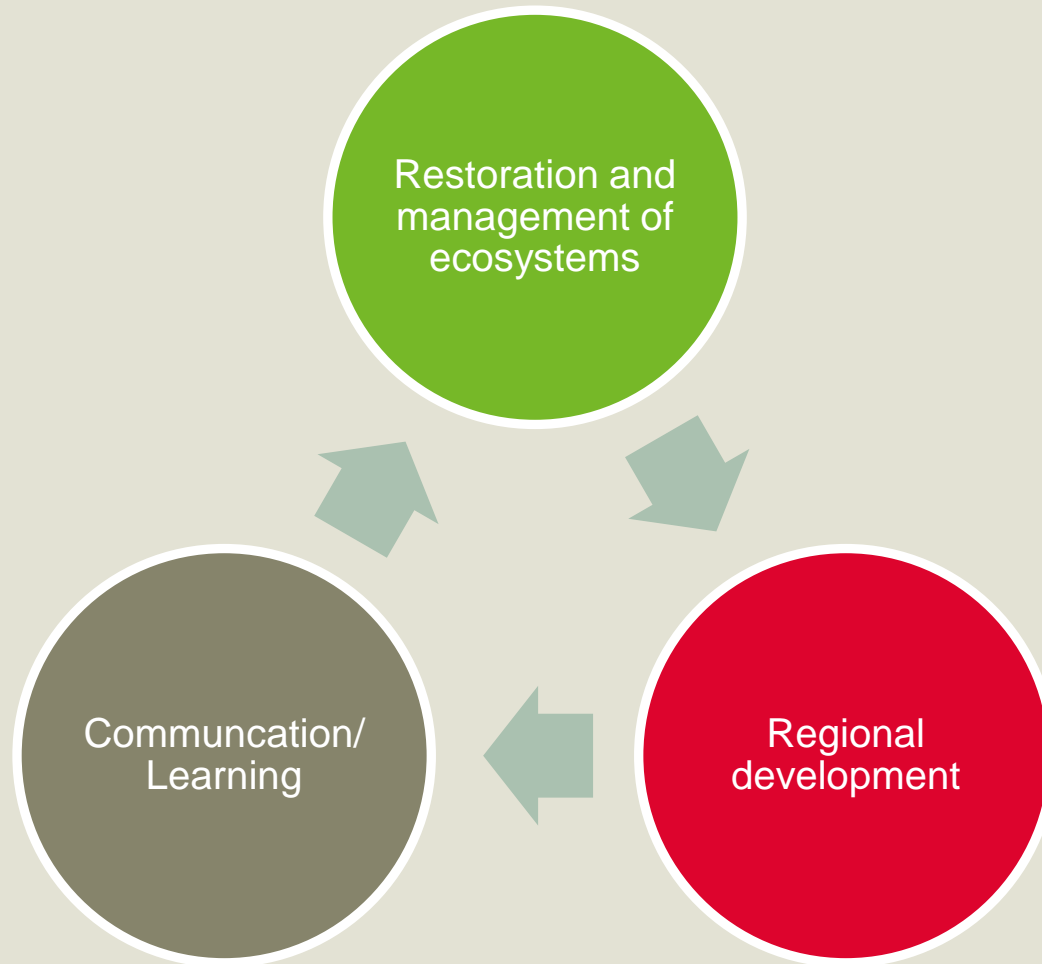
2014-2017:

**„Biodiversity under climate change:
Community based conservation,
management and development concepts at
the origin of wild coffee‘**

(2,4 Mio. EUR)



Main pillars of the projects



Selected project partners, supporters and subcontractors



Southern Nations, Nationalities
and Peoples Regional State (SNNPR)



Kafa Zone Administration



WAGENINGEN UR
For quality of life



DAMASCENE ESSENTIAL
OILS AND PRODUCTS PLC



Highlights of the first project

Restoration of >1,000 ha forests/ farmland with native tree species

Transfer of **11,000 ha** of forest area to **Participative Forest Management (PFM)**

Employment and training of **30 rangers**

Introduction of **11,200 wood-saving stoves** to communities



Highlights of the first project

Training of >100 tourism service providers

Business support to community based tourism initiatives

Support to **ecotourism infrastructure** (e.g. hiking trails, open air museum, model lodge)

Monitoring of CO2 emissions/ forest change

Awareness creation program on biosphere reserves/ forest preservation and climate change



Our new goals

- **Restoration of 1,500 ha forests**
- Review of PFM sites and transfer of **4,500 ha forest to participatory forest management**
- **Conservation of 500 ha of wetlands/ riverines and transfer of community based management**
- Introduction of **alternative energy sources** and **2,500 improved energy saving stoves**
- **Multiplication program with 10 rangers**



Our new goals

- **Alternative income sources for 300 women** (natural local products, improved pottery)
- **Communication campaign for ecotourism** as source of income and **marketing of Kafa Biosphere Reserve** as tourism destination
- Enhancement of **agrobiodiversity for climate change resilience** and **food security**



Our new goals

- Enjoy Biodiversity Campaign:
 - **Awareness creation for 250,000** local people on biodiversity
 - **150 biodiversity campaigners**
 - **20 nature camps for youngsters and knowledgeable elders**
- Cooperation with **spiritual leaders** as promoters of biodiversity conservation
- Development of a **school module on biodiversity**

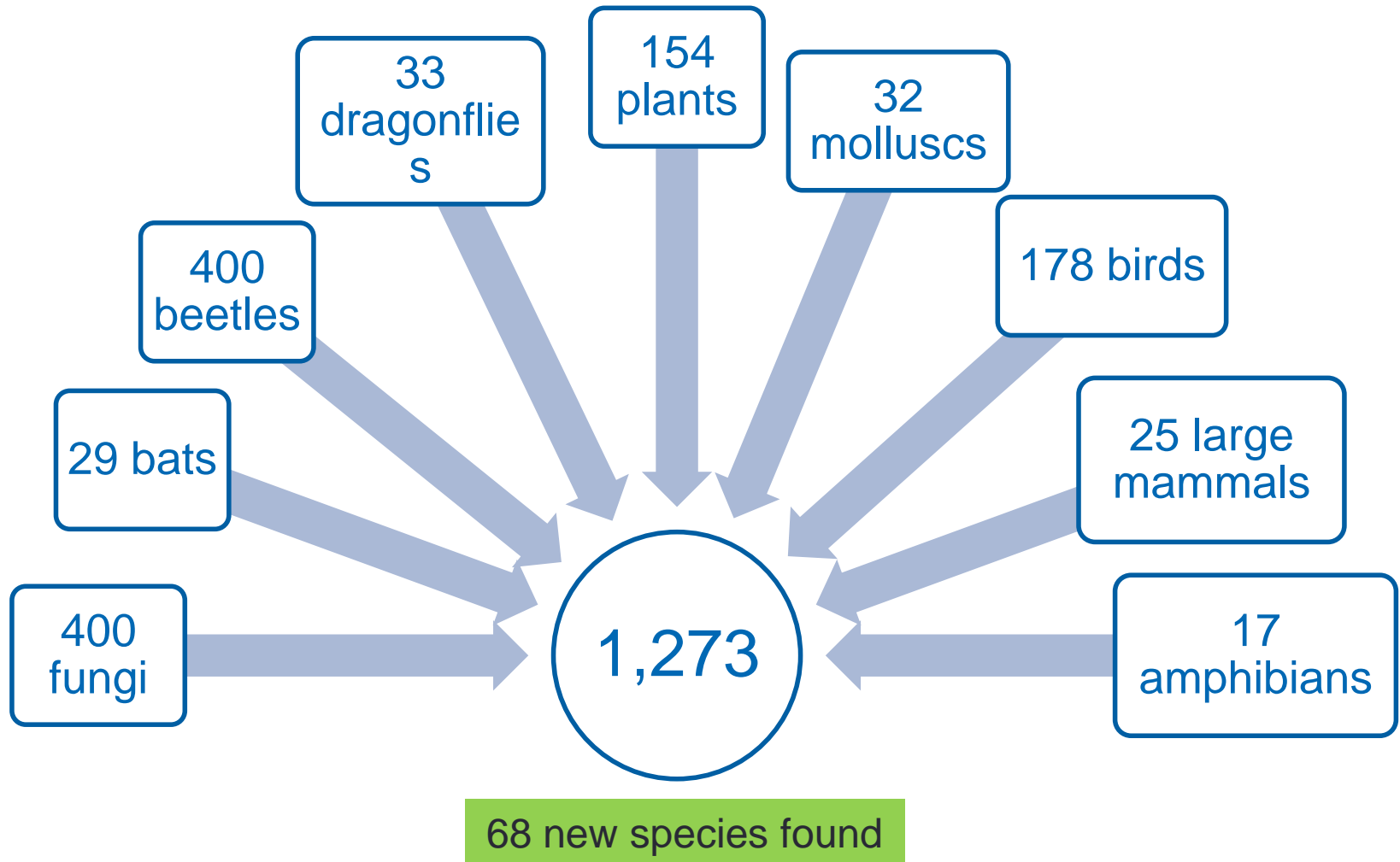


Our new goals

- Monitoring of carbon emissions, changes of forests, **wetlands and biodiversity**
- **Survey on biodiversity** for reference and identification of indicator species for monitoring



NABU's International Biodiversity Assessment





Thank you for your attention!



NABU Headquarters

Svane Bender-Kaphengst

Charitéstraße 3

10117 Berlin, Germany

Tel. +49 (0)30.28 49 84-1711

Fax +49 (0)30.28 49 84-20 00

Svane.Bender@NABU.de

www.NABU.de

Project benefits

Preservation of habitats and biological diversity (particularly Arabica coffee) and **adaptation to climate change**

Creation of “best-practise” model for climate and resource protection and sustainable regional development

Improve living conditions of local communities (new sources of income, job creation, health and living conditions)

Back up of Ethiopian laws and strategies on natural resource management



NABU's goals in Africa

- Conservation of species, biodiversity and habitats
- Adaptation to climate change
- Fostering of regional development
- Support of protected areas/ UNESCO biosphere reserves
- Strengthening of local partner NGOs
- Environmental education

